

# MONTHLY MEMBERSHIP PROGRESS REPORT

LOCATION AUSTRALIA

District 201V2

Results as of: 5/31/2023

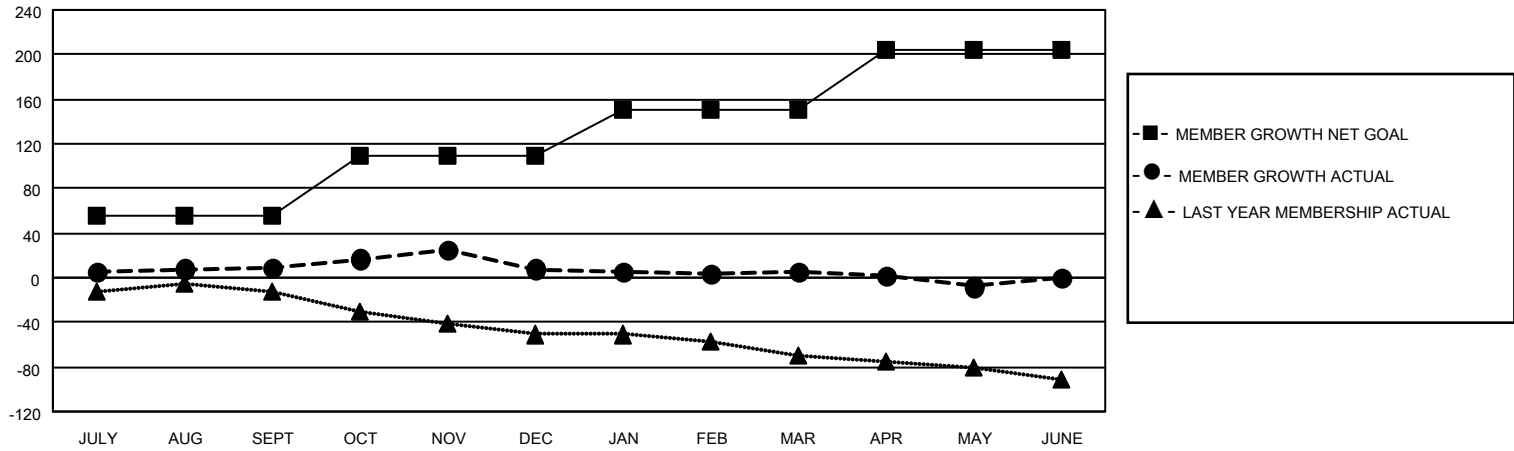
Clubs			
RESULTS FOR 2022-2023			
QUARTER	NEW CLUB GOAL	NEW CLUBS	DROPPED CLUBS
JULY/AUG/SEPT	0	0	1
OCT/NOV/DEC	0	0	0
JAN/FEB/MAR	1	0	0
APR/MAY/JUNE	0	0	0

Members			
RESULTS FOR 2022-2023			
QUARTER	MEMBER GROWTH NET GOAL	MEMBER GROWTH ACTUAL	DROPPED MEMBERS ACTUAL (including transfers)
JULY/AUG/SEPT	55	51	36
OCT/NOV/DEC	55	38	36
JAN/FEB/MAR	40	44	41
APR/MAY/JUNE	55	16	27

**GOALS AND ACTUAL NEW CLUBS CUMULATIVE**



**GOALS AND ACTUAL MEMBERS CUMULATIVE**



**DROPPED CLUBS: 1**

**45 CLUBS OF 65 ADDED 1 OR MORE NEW MEMBERS**

**GENDER DISTRIBUTION**

MALE	862 (64.96%)
FEMALE	464 (34.97%)
NON BINARY	1 (0.08%)
PREFER NOT TO ANSWER	0 (0.00%)

**DROPPED MEMBERS**

[CLICK HERE FOR CUMULATIVE MEMBERSHIP DATA](#)

DECEASED	16
CLUB CANCELLED	0
OTHER	123
<b>TOTAL</b>	<b>139</b>

TOTAL FAMILY UNIT MEMBERS	178
FAMILY MEMBERS PAYING HALF DUES	89